



AN ALLETE COMPANY

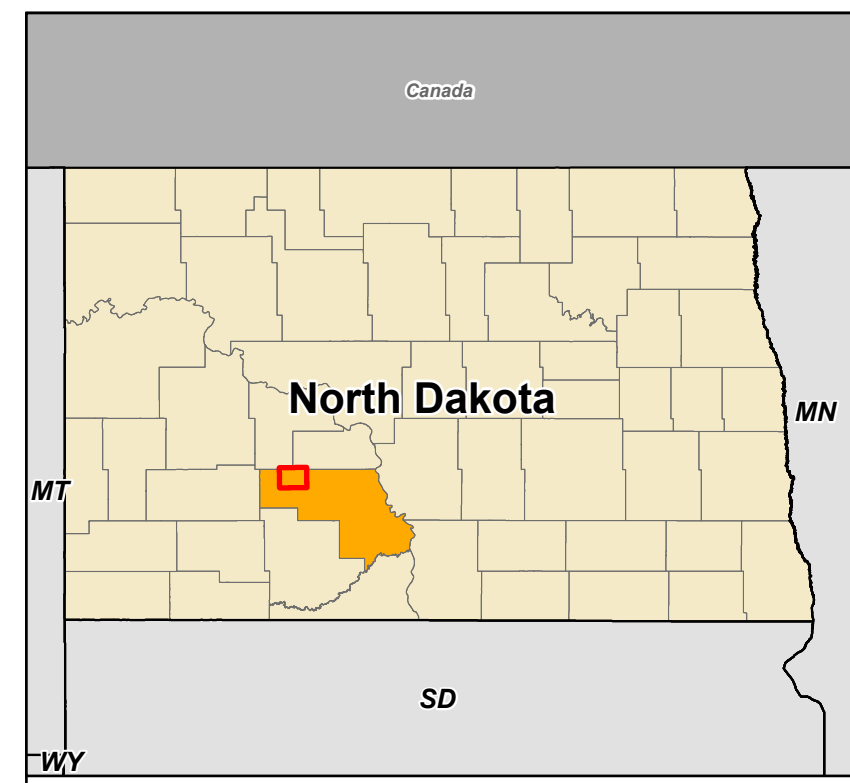
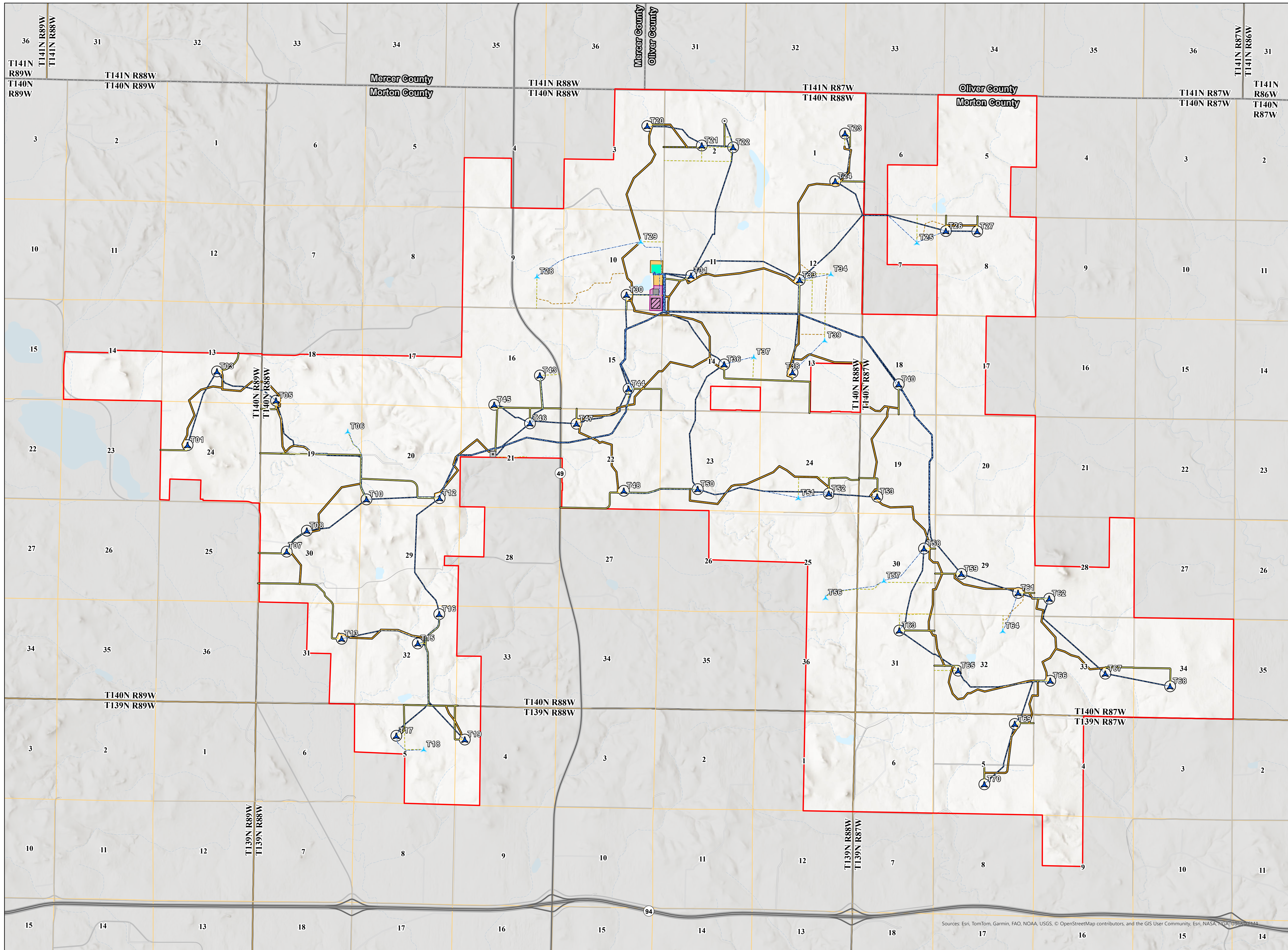
Attachment G

Revised Project Figures



AN ALLETE COMPANY

The updates to this Figure are a revision of the Wind Project boundary made in response to a request from a landowner and a change to clarify a location where Wind Project infrastructure (a collection line) is anticipated to cross from one portion of the Project Boundary to another along a public road right-of-way.



- ⊙ Met Tower
- ▲ Primary Turbine
- ▲ Alternate Turbine
- ADLS Radar Tower
- Collection Line
- Primary Crane Path
- Alternate Crane Path
- Primary Access Road
- Alternate Access Road
- ▨ Construction Laydown Yard
- O&M Building
- O&M Yard
- Substation Yard
- Substation Facility
- ▭ Construction Easement
- ▭ Project Area
- ▭ PLSS Section Boundary
- ▭ PLSS Township Boundary
- ▭ County Boundary

Longspur Wind Energy Center

Morton County,
North Dakota

Sources: Esri, TomTom, Garmin, FAO, NOAA, USGS, © OpenStreetMap contributors, and the GIS User Community, Esri, NASA, NOAA, USGS, FEMA